

DMTK3

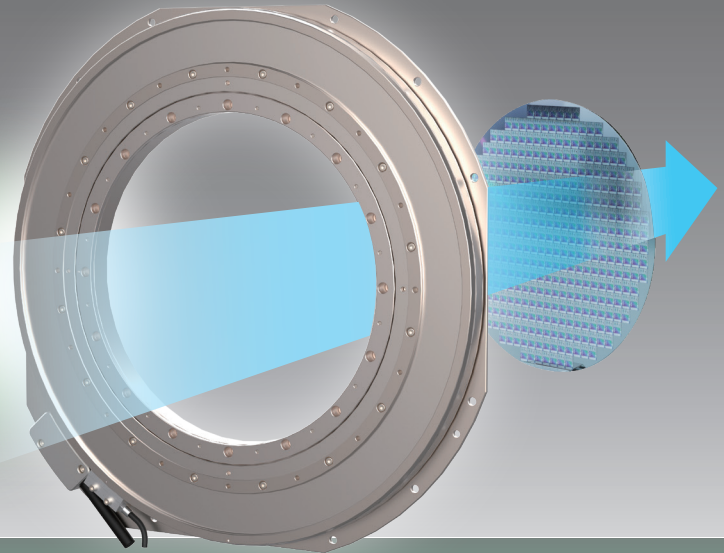
Ultra-thin
Direct Drive Motor

New Debut

Hollow Shaft up to $\varnothing 340$ mm

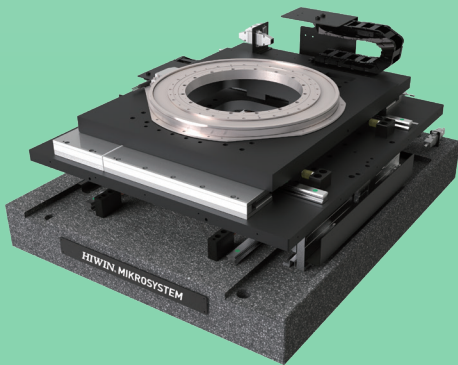
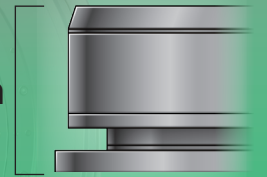
DMT series

Fits from 4~12 inches wafer



- ✓ Super large hollow
- ✓ Excellent positioning accuracy, velocity ripple
- ✓ No reduction mechanism, zero backlash
- ✓ High thrust force density, high rigidity design

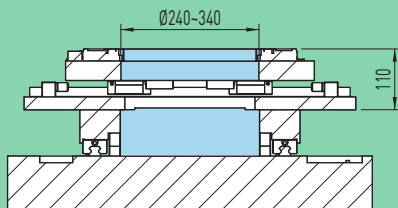
30 mm



Precision Large Hollow Positioning XY θ Platform

Excellent Structure Design

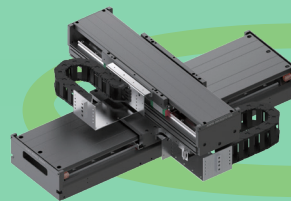
The XY θ positioning platform with low center of gravity, large hollow and high-precision positioning features are commonly used in double-sided application and backlight modules.



Space Saving

Low Center of Gravity

High Rigidity



Linear Motor Stage



Ultra-thin Direct Drive Motor
DMT series

Specifications

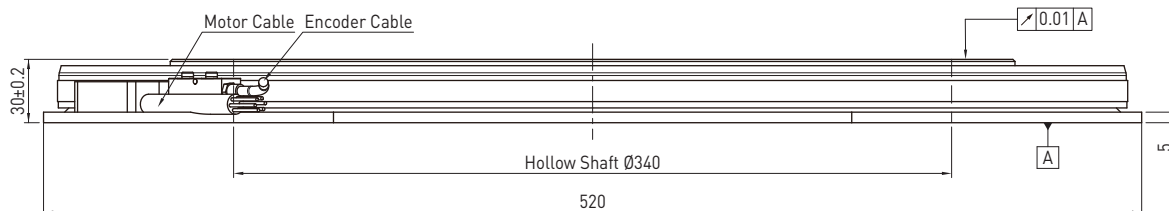
	Symbol	Unit	DMTK3
Motor power		W	487
Continuous torque	T _c	Nm	31
Continuous current	I _c	Arms	2.6
Peak torque (Within 1s.)	T _p	Nm	110
Peak current (Within 1s.)	I _p	Arms	8.7
Torque constant	K _t	Nm/Arms	13.46
Electrical time constant	T _e	ms	0.7
Resistance (line to line at 25°C)	R ₂₅	Ω	23.8
Inductance (line to line)	L	mH	14.35
Number of poles	2 _p		60
Back emf constant (line to line)	K _v	V _{rms} /(rad/s)	7.77
Motor constant (line to line at 25°C)	K _m	Nm/√W	1.4
Thermal resistance	R _{th}	K/W	0.33
Temperature sensor			PTC 100
Nominal input voltage		V _{dc}	600
Inertia of rotating parts	J	kgm ²	0.3
Mass of motor	M _m	kg	20
Max. axial load	F _a	N	750
Max. moment load	M	Nm	75
Max. speed		rpm	100
Resolution		p/rev	4324800
Repeatability		arc-sec	± 1.5
Accuracy		arc-sec	± 15 / ± 5 ¹⁾
Axial runout	R _a	mm	0.01
Radial runout	R _r	mm	0.01
Height	H	mm	30
Hollow shaft diameter		mm	340

Note : ¹⁾ Optional

* All specifications in the table are in ±10% of tolerance except dimensions.

* The product should avoid environment with corrosive gas, cutting oil and metal powder.

DMTK3



Global Sales And Customer Service Site

HIWIN GmbH
OFFENBURG, GERMANY
www.hiwin.de
www.hiwin.eu
info@hiwin.de

HIWIN Schweiz GmbH
JONA, SWITZERLAND
www.hiwin.ch
info@hiwin.ch

HIWIN KOREA
SUWON · CHANGWON, KOREA
www.hiwin.kr
info@hiwin.kr

HIWIN JAPAN
KOBE · TOKYO · NAGOYA · NAGANO ·
TOHOKU · SHIZUOKA · HOKURIKU ·
HIROSHIMA · FUKUOKA · KUMAMOTO,
JAPAN
www.hiwin.co.jp
info@hiwin.co.jp

HIWIN s.r.o.
BRNO, CZECH REPUBLIC
www.hiwin.cz
info@hiwin.cz

HIWIN CHINA
SUZHOU, CHINA
www.hiwin.cn
info@hiwin.cn

HIWIN USA
CHICAGO, U.S.A.
www.hiwin.us
info@hiwin.com

HIWIN FRANCE
STRASBOURG, FRANCE
www.hiwin.fr
info@hiwin.de

Mega-Fabs Motion Systems, Ltd.
HAIFA, ISRAEL
www.mega-fabs.com
info@mega-fabs.com

HIWIN Srl
BRUGHERIO, ITALY
www.hiwin.it
info@hiwin.it

HIWIN SINGAPORE
SINGAPORE
www.hiwin.sg
info@hiwin.sg

HIWIN MIKROSYSTEM CORP.

No.6, Jingke Central Rd.,
Taichung Precision Machinery Park,
Taichung 40852, Taiwan
Tel: +886-4-23550110
Fax: +886-4-23550123
www.hiwinmikro.tw
business@hiwinmikro.tw